



**TRIME**<sup>®</sup>  
Power Division



***MGTP* 60 SS KR**

**GENERATING SET**

EN

**USER'S MANUAL**



Model: RP354-60TS4  
User's manual: RP354-60TS4  
Rev.00 Date: 26/03/2024

*Dear customer,*

*We wish to thank you very much for having purchased our product. With proper handling and maintenance, this product will provide dependable, long-term service. Our customer service is always available, might you need it.*

*This manual is intended for users of the equipment. This manual is compiled from information available and current at time of approval for printing.*

*Please consider that this manual may refer to controls and optional equipment that are not present on your particular machine.*

*It is important that you know your machine and its equipment and how to operate it properly, so **please read the operating instructions carefully and understand them before operating the machine.***

*Machine specifications can be modified at any time without any obligation to update this publications. It is recommended to read this manual thoroughly because incorrect operation may result in the warranty being void.*

*It is also recommended to use only original factory spare parts*

**Reproduction of this manual is not permitted, unless written approval is obtained from factory.**



Trime S.r.l.

Strada per Robecco 20081 Cassinetta di Lugagnano (MI) Italy.  
Tel. +39029421724 - e-mail: [info@trime.it](mailto:info@trime.it) - Internet: [www.trime.it](http://www.trime.it)

---

## TABLE OF CONTENTS

<b>SAFETY RULES.....</b>	<b>4</b>
SAFETY PRECAUTIONS TO BE OBSERVED .....	4
FIRE PRECAUTIONS .....	4
FLAMMABLE FLUID PRECAUTIONS .....	4
ELECTRICAL HAZARD .....	5
LUBRICATION AND SERVICING .....	5
SAFETY STICKERS GUIDE .....	6
<b>TECHNICAL SPECIFICATIONS .....</b>	<b>7</b>
GENERATOR IDENTIFICATION .....	7
TECHNICAL DATA .....	8
MACHINE LAYOUT .....	9
MACHINE COMPONENTS.....	10
CONTROL DEVICES .....	12
<b>HANDLING AND TRANSPORT.....</b>	<b>13</b>
HANDLING AND TRANSPORT WITH CRANE.....	13
HANDLING AND TRANSPORT WITH LIFTING HOOKS .....	13
PRELIMINARY CHECK & STARTING .....	14
<b>GENERATOR USE .....</b>	<b>15</b>
DSE 7310 MODULE: DESCRIPTION OF CONTROLS.....	15
MANUAL MODE .....	16
AUTO MODE .....	16
REGENERATION .....	17
<b>ROUTINE MAINTENANCE.....</b>	<b>19</b>
<b>DISPOSAL AND DECOMMISSIONING .....</b>	<b>19</b>
<b>SPARE PARTS.....</b>	<b>20</b>
BASEFRAME .....	20
POWER PACK .....	22
CANOPY .....	23
CONTROL PANEL .....	25
ALTERNATOR .....	27
<b>ELECTRICAL DIAGRAM .....</b>	<b>29</b>
<b>WARRANTY .....</b>	<b>31</b>

## SAFETY RULES

### SAFETY PRECAUTIONS TO BE OBSERVED

Read this manual and learn the operating characteristics and limitations of the machine before operating it.

The manufacturer declines all liability for injury to persons and damage to components due to not respecting the safety rules.

Report all malfunctions to a maintenance responsible. If there are any repairs to be done, do not operate the equipment. Normal service and maintenance, if performed as required, can prevent unexpected and unnecessary down time. This manual describes standard inspections, operation and servicing with the normal safety precautions required for normal servicing and operating conditions. Operators and maintenance personnel must be safety conscious and alert to recognize potential operating or servicing safety hazards at all times. They should immediately take the necessary precautions to ensure safe operation and servicing of the machine.



- Be aware of operating risks that may be created by weather changes. Follow the correct procedures in the event of heavy rain or electrical storm.
- Lower panels when not in use, or if high winds or electrical storms are expected in the area.
- Use protective clothing and safety equipment: gloves, safety boots, safety hard hat, goggles, ear protection, and dust masks when necessary.
- Know all side clearances and overhead obstructions for safe operation of the machine.
- ALWAYS** make sure area above the machine is open and clear of any kind of obstruction.
- Position and operate on a firm surface.
- The machine must be levelled before the use.
- Keep area around the machine clear of people while raising and lowering the panels.
- ALWAYS** handle fuels and lubricants carefully, clean up spills to avoid fire and slipping risks.
- NEVER** using the unit if it is in need of repair.
- The area near the exhaust pipe become hot in use. Be careful if you need to work there.
- DO NOT** use the unit if insulation on the electrical cord is cut or worn through.
- DO NOT** permit to untrained personnel to operate the machine.
- NEVER** operate a unit if you are tired, not concentrated or under the influence of drugs or alcohol.
- Keep children and animals away from the machine.

### FIRE PRECAUTIONS



- Clean all dirt, oil and other fluids from components to minimize fire risks and aid in spotting loose or leaking components.
- Check the engine for oily rags or other debris that could be potential cause of fire before starting the unit.
- Have a fire extinguisher nearby. Be sure the extinguisher is properly maintained and be familiar with its use.
- In the event of fire, the following extinction means are appropriated: carbonate anhydride (or carbon dioxide), powder, foam, nebulized water. Avoid to use water jets.
- In the event of fire, wear a breathing apparatus if there is heavy smoke.

### FLAMMABLE FLUID PRECAUTIONS



- Take due care when working with fuel. Diesel fuel is a health hazard. Be aware that there is also danger of fire and pollution.
- DO NOT** clean the unit components using flammable fluids.
- Check and ensure that all-fluid systems caps, drain, valves, fittings, lines etc., are secure and leak free.
- ALWAYS** shut off engine while refueling and be very cautious if engine is still hot.
- NEVER** smoke while checking or adding fuel or handling fluid containers.
- NEVER** refuel near an open flame
- DO NOT** fill the tank completely.
- DO NOT** refuel in an enclosed area with poor ventilation.
- DO NOT** run engine without the fuel tank cap.
- DO NOT** use the machine in areas with risk of explosion or fire.

## SAFETY RULES

### ELECTRICAL HAZARD



- DO NOT** smoke or allow open flames or sparks near the batteries.

- Before doing repair works, **ALWAYS** disconnect batteries. Disconnect negative terminal first and reconnect last.
- Before carrying out any welding on the machine, **ALWAYS** make sure to disconnect batteries and alternator leads.
- The tools must **NOT** come into contact with the battery terminals with the risk of creating an electric arc.
- Use jumper cables only. Improper use can result in severe damage and safety risk.
- NEVER** use the machine if insulation on electrical cord is cut or worn through.

### LUBRICATION AND SERVICING



- Only authorized and trained personnel is allowed to perform the machine maintenance.  
Please read the operator's manual and maintenance manual before using or servicing the machine.

- HIGH VOLTAGE!** This equipment utilizes high voltage circuits. Always exercise extreme caution when trouble shooting or repairing any electrical circuit.
- Only a qualified electrician should troubleshoot or repair electrical problems occurring on the machine.
- Before servicing, ensure that the engine start switch is turned to OFF.
- Disconnect electrical power and turn off engine before removing protective covers on high voltage electrical closures.
- NEVER** perform even routine service (oil/filter changes, cleaning, etc.) if all electrical components aren't shut down.
- NEVER** allow water to accumulate at the base of the machine. If water is present, **DO NOT** service!
- DO NOT** service electrical components if your clothing or skin is wet.
- If the unit is stored outside, check the engine and generator for any moisture. If wet, dry the unit thoroughly before starting.
- Never wash the unit with a high pressure hose or with any kind of power washer.
- Open main circuit breaker before disconnecting battery cables.
- Ensure to always relieve pressure before servicing any pressurized system.
- Be aware of hot exhaust pipes and engine.
- KEEP AWAY** from moving parts on generator and engine. Be aware of the hazard if you wear loose clothing.
- Check and replace all missing and hard-to-read labels.
- Make sure slings, chains, hooks, ramps, jacks, and other types of lifting devices are attached securely and have enough weight-bearing capacity to lift or hold the equipment safely.

## SAFETY RULES

## SAFETY STICKERS GUIDE

### Safety stickers meanings



Attention! Read user's manual before operating the machine.



Attention, high voltage! Read user's manual before operating the machine.



Do not extinguish with water! Attention, don't touch the moving parts.



Attention! Danger of crushing.



Attention, battery on board. Contains corrosive liquids.



Attention! Hot liquid under pressure during machine use and immediately after. Pay attention when opening.



Lifting point. Ensure lifting device has enough capacity to handle machine weight.







Attention! Diesel fuel on board. Stop the engine while refueling. Keep anything that could cause sparks, flame or fire at a safety distance from the machine.



Earthing point. The grounding of the machine always needs to be done paying attention on the section of the cable to be used (never to be less than 10 mm<sup>2</sup>).

TECHNICAL SPECIFICATIONS

GENERATOR IDENTIFICATION

 Strada per Robecco - 20080 Cassinetta di Lugagnano (MI) Italy tel. +39 02 9421724   	<b>MGTP 60 SS KR</b> DIESEL ENGINE DRIVEN				<b>Lwa</b> <b>90</b> SERIAL N° XXXXXXXXX <small>OWNER'S MANUAL</small> <small>RP354-60TS4</small>
	KVA	60	V	400	
	COS $\varphi$	0.8	Hz	50	
	IP 21	I.CL. H	RPM	1500	
	DRY WEIGHT		1538 kg		

Information regarding the machine model, are on the unit serial number plate. Always quote the machine model and serial number when contacting your dealer, the factory and for any spare parts requests. All of our products comply with CE requirements. They are conform to directives and fulfill all the relevant safety requirements.

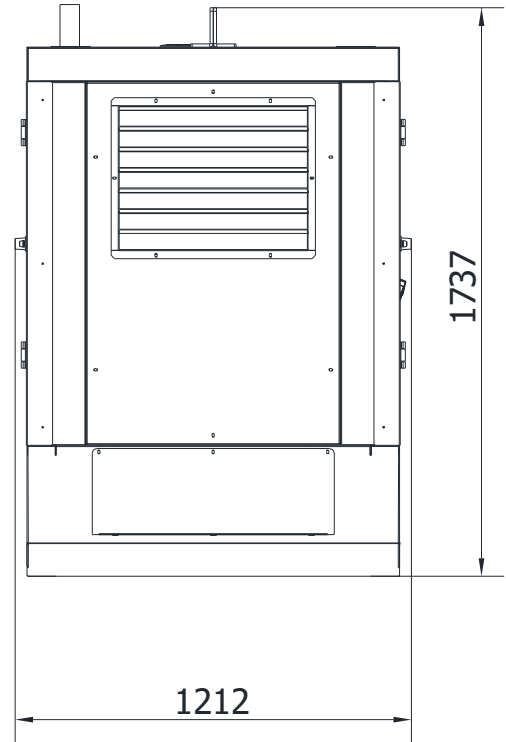
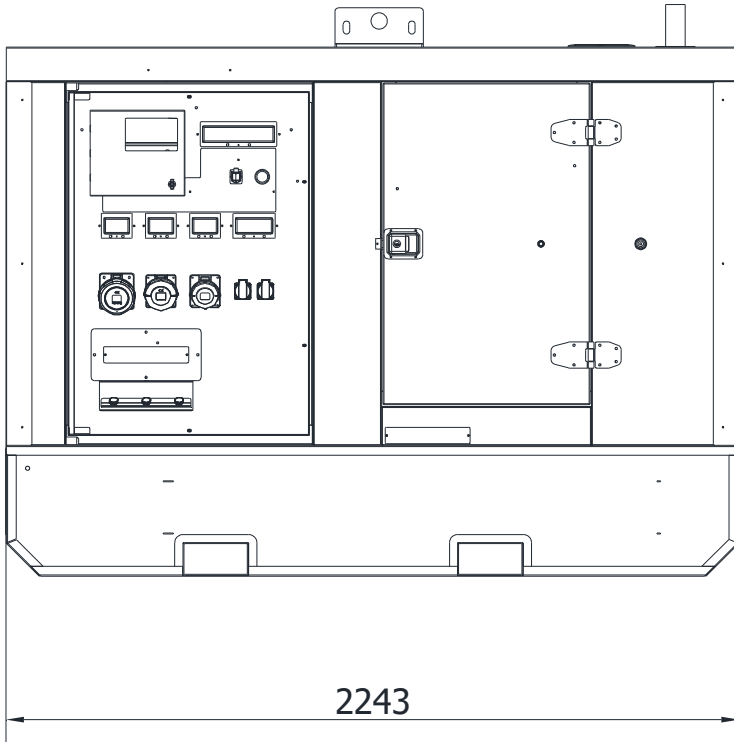
**TECHNICAL DATA**

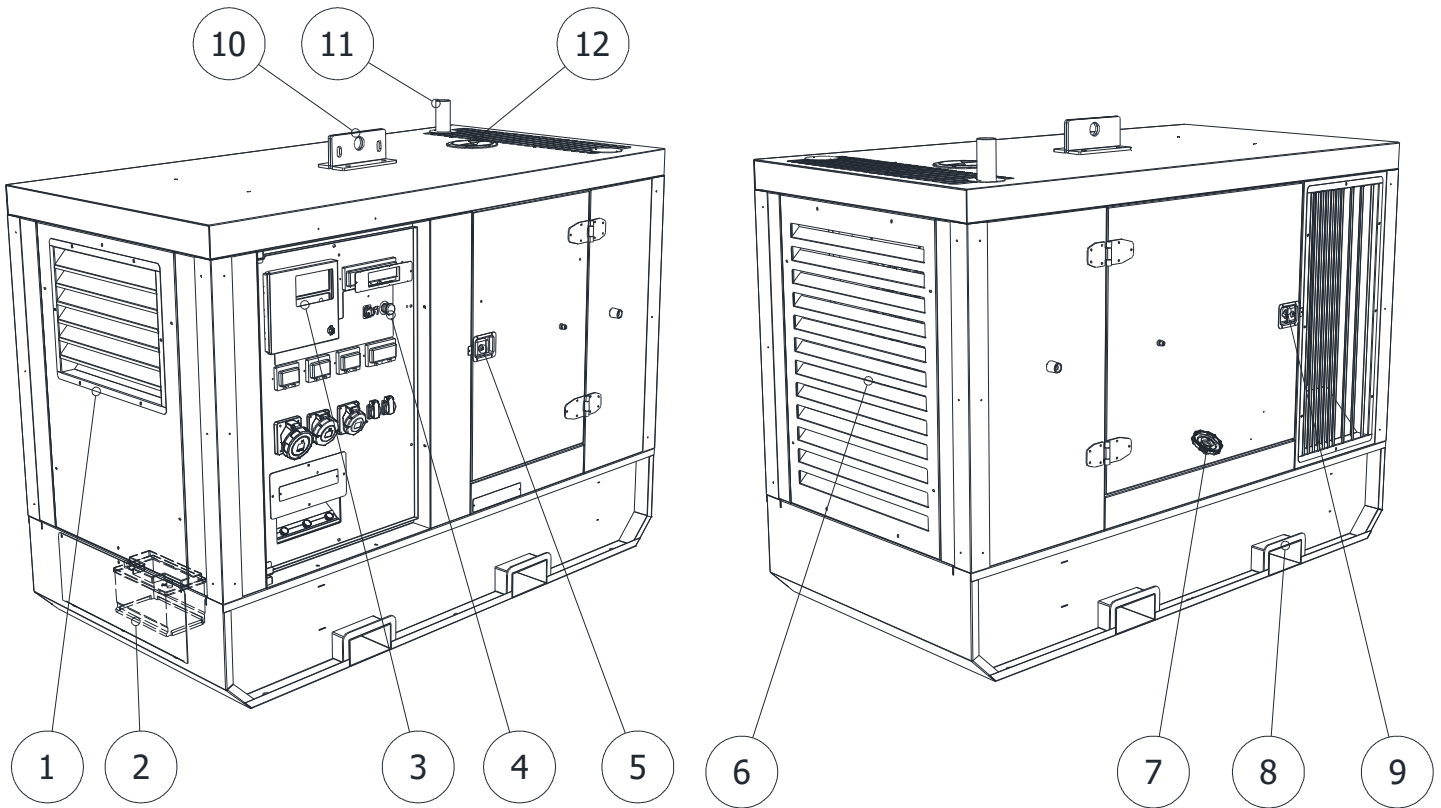
<b>Engine</b>	Model	<b>KOHLER KDI-TCN 3404E5/22</b>
	Governor	<b>Electronic</b>
	Cylinders number	<b>4</b>
	Displacement	<b>cm<sup>3</sup> 3359</b>
	Engine speed (rpm)	<b>1500 rpm</b>
	Cooling system	<b>Liquid</b>
	<hr/>	
<b>Generator</b>	Model	<b>STAMFORD S1L2-Y1</b>
	Rated output	<b>60kVA – 400V</b>
	Power available to auxiliary socket	<b>60kVA – 400V</b>
	Rated frequency	<b>50Hz</b>
<hr/>		
<b>General informations</b>	Noise level	<b>90 Lwa</b>
	Battery	<b>12 V</b>
	Fuel tank capacity	<b>240 l</b>
	Dimensions in transport (L x W x H)	<b>2243 x 1212 x 1737 mm</b>
	Dimensions in operation (L x W x H)	<b>2243 x 1212 x 1737 mm</b>
	Dry weight	<b>1538 kg</b>

For any further details about the engine, inverter, batteries, etc., refer to the manuals attached to the machine.



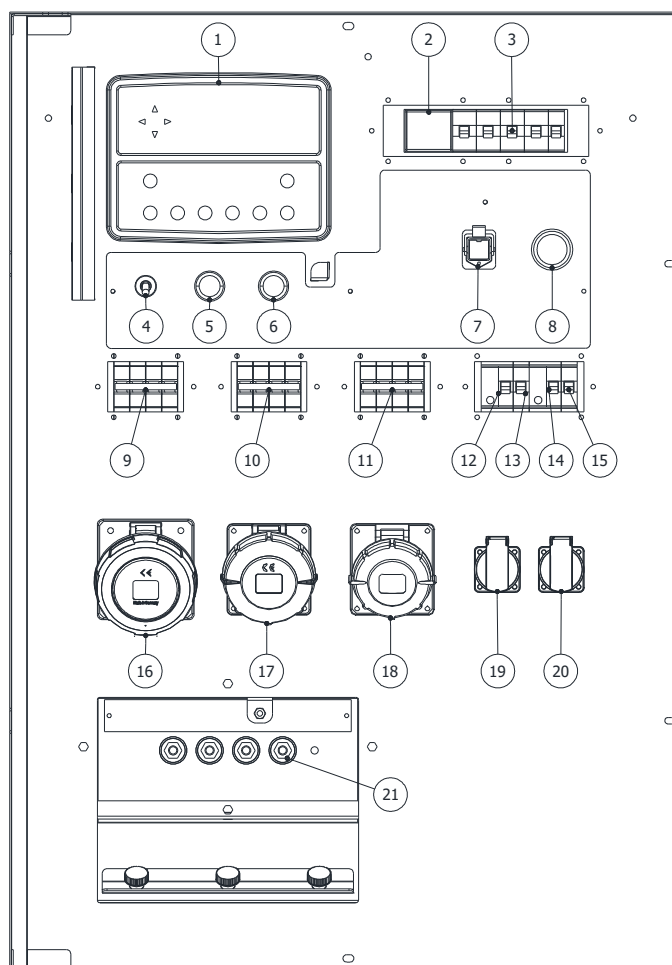
MACHINE LAYOUT





1. Generator access panel
2. Battery inside
3. Control panel
4. Emergency stop
5. Engine access door
6. Exhaust access door
7. Fuel filler inside
8. Forklift pockets
9. Engine access door
10. Lifting hook
11. Exhaust exit
12. Radiator

CONTROL PANEL



- |                                       |                            |
|---------------------------------------|----------------------------|
| 1. DSE control unit                   | 17. 32A 400V outlet socket |
| 2. ELR                                | 18. 16A 400V outlet socket |
| 3. Main circuit breaker               | 19. 16A 220V outlet Shuko  |
| 4. DSE supplying switch               | 20. 16A 220V outlet Shuko  |
| 5. Regeneration button                | 21. 400V hard wire         |
| 6. Regeneration inhibit               |                            |
| 7. Remote start/stop device connector |                            |
| 8. Emergency stop                     |                            |
| 9. MCB 63A 400V socket protection     |                            |
| 10. MCB 32A 400V socket protection    |                            |
| 11. MCB 16A 400V socket protection    |                            |
| 12. RCCB 25A                          |                            |
| 13. MCB 16A Shuko protection          |                            |
| 14. RCCB 25A                          |                            |
| 15. MCB 16A Shuko protection          |                            |
| 16. 63A 400V outlet socket            |                            |

**DSE 7310 manual & auto start control module**

The DSE 7310 is an compact control module that provides a comprehensive range of features for single-set applications. The controller can be used in manual or auto start mode.



**Emergency stop button**

The machine is fitted with a emergency stop button as standard. It is located on the external panel.

**In case of need, push the emergency button and it will shut off the engine in a few seconds.**

The engine will remain off until the emergency stop button is released.

**To release the button, twist it in the direction of the arrows on the button (clockwise sense).**



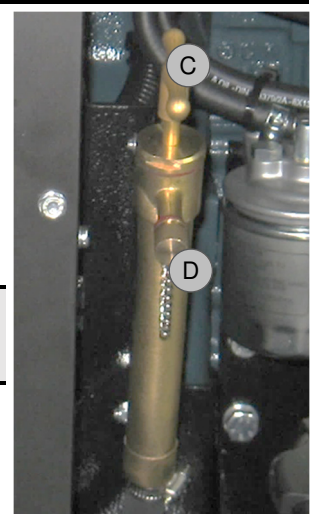
**Engine oil drain manual pump**

The machine is fitted with a manual pump as standard, to facilitate the operator in the engine oil drain. Proceed as follows:

- Put under the cap (D) a container.
- Remove the cap (D).
- Operate the pump by acting to the handle (C).
- Emptied all the oil replace the cap (D).



**Dispose of the oil according to local regulations.**



## HANDLING AND TRANSPORT

### HANDLING AND TRANSPORT WITH CRANE



Handling by crane is allowed only if the machine is connected to the crane through the lifting eye.

- Ensure that the lifting capacity of the crane and lifting devices is suited to the weight of the machine to move. The weight is specified in the provided documentation (user's manual) and on the data plate.
- Connect the cable/hook to the lifting eye and tension the cable.
- Lift the machine for about 10 cm (4 in.).
- Move slowly and position the machine on the ground or on the vehicle.

### HANDLING AND TRANSPORT WITH LIFTING HOOKS



- All lifting operations must be carried out by qualified personnel, such as fork lift operators, crane operators and slingers. The operator should be deemed responsible for using the correct method of slinging and lifting the generator unit.
- Never leave the load insecure.
- When moving and transporting the machine, do not tilt it excessively.
- When lifting and moving the machine, do not stay or walk within its proximity.
- Never leave the machine slung overhead.

Before starting and operating the unit, we suggest making the following routine checks for improved safety, better efficiency, longer product life and in order to avoid work disruptions.

- Check that the machine is leveled correctly and stabilized firmly.
- Check fuel, engine oil and coolant level. Top them if necessary.
- Ensure that the fuel lines are undamaged and correctly connected.
- Ensure that all the electrical cables are undamaged and correctly connected.
- Check that the main switch and the circuit breakers are in the OFF position.
- Drive the earth picket into the ground (earth) following any risk assessment. (\*)
- Check that the grounding cable is securely attached to the unit.
- Check that the emergency stop button is not pressed. If necessary, rotate the button clockwise to release it.
- Open the frontal door to access the control panel.







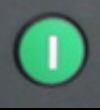

For operators' safety, the grounding of the machine always needs to be done paying attention on the section of the cable to be used (never to be less than 10 mm<sup>2</sup>). For the connection of the grounding cable, please always use the clip located on the control panel, on the right side of the machine. Always perform grounding operations in compliance with local/international regulations.

---

## GENERATOR USE

### DSE 7310 MODULE: DESCRIPTION OF CONTROLS



No.	Name	Function	
1	Navigation	Move the selector up and down on the screen.	
2	Display	Graphical	
3	Alarm LED	The LED is red when there is an active alarm	
4	Open	Open generator (only manual mode)	
5	Stop	Stops the genset if manual or auto mode is selected. When you push the button in auto mode, the running mode also changes to manual mode.	
6	Manual	Select Manual mode	
7	Auto	Select Auto mode	
8	Alarm	Mute alarm/Lamp test	
9	Start	Starts the genset when manual mode is selected	
10	Transfer	Transfer to generator (manual mode only)	

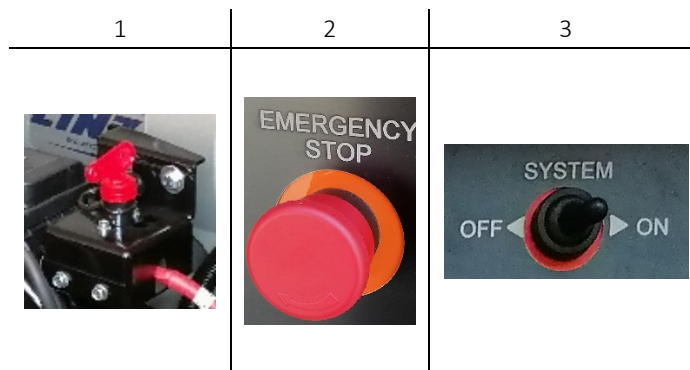
## GENERATOR USE

## MANUAL MODE

1. Ensure that the battery switch is in ON position.
2. Ensure that the emergency STOP is in correct position.
3. Put the ON/OFF selector in ON position.
4. On DSE press button 6, then press button 9.
5. If engine start in manual mode, must be turned off manually by pressing button 5 on DSE.

## AUTO MODE

1. Ensure that the battery switch is in ON position.
2. Ensure that the emergency STOP is in correct position.
3. Put the ON/OFF selector in ON position.
4. On DSE press button 7.
5. Connect the remote device connector.





## GENERATOR USE

## REGENERATION

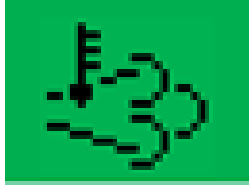
The STAGE V engine equip a DPF that, depending from the soot level needs to be regenerated periodically.

### AUTOMATIC REGENERATION

During the normal functioning of the machine, the engine will periodically perform an automatic regeneration cycle.

Never stop the machine when the automatic regeneration cycle is on going.

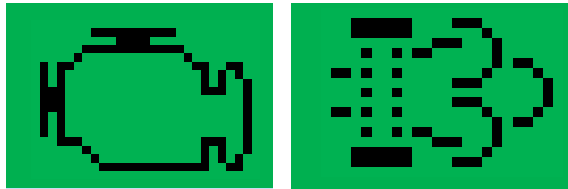
During the automatic regeneration the DSE monitor will show:



### MANUAL REGENERATION

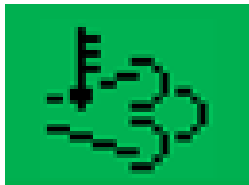
If the automatic regeneration fail several times, or however when the soot level reach the 105%, the engine will ask a manual regeneration.

The DSE monitor will show:



### To start the manual regeneration:

Keep pushed for some seconds the DPF REGENERATION button (n°5 pct.2.2), until on the DSE monitor will appear



The main circuit breaker will open, and the regeneration will start.

**We strongly suggest to do not close the main circuit breaker during the regeneration.**

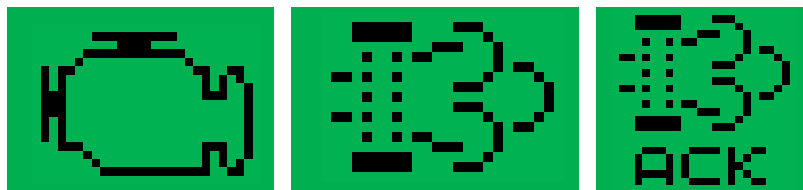
After the regeneration ends (about 30/40 minutes), it will be possible to restart the normal working.

### FORCED REGENERATION

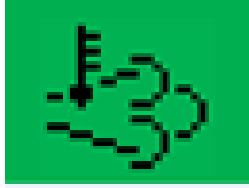
It is possible to start a regeneration cycle before the request, but not less than 50 hours from the last regeneration.

### To start a forced regeneration:

Keep pushed for some seconds the DPF REGENERATION button (n°5 pct.2.2), until on the DSE monitor will appear



Keep pushed for some seconds the DPF REGENERATION button (n°5 pct.2.2), until on the DSE monitor will appear



The main circuit breaker will open, and the regeneration will start.

**We strongly suggest to do not close the main circuit breaker during the regeneration.**

After the regeneration ends (about 30/40 minutes), it will be possible to restart the normal working.

**WARNING**

If no regeneration cycle is done and the soot level reach 125%, the engine will block, and it will be necessary the intervention of specialized personnel from engine manufacturer.

**This operation is not under warranty.**

**SOOT LEVEL CHECK**

With the system active, is it possible to check the soot level on the engine values:



## ROUTINE MAINTENANCE

Poorly maintained equipment can become a safety hazard. In order, for the equipment, to operate safely and properly over a long period of time, periodic maintenance and occasional repairs are necessary.

**Any kind of maintenance work on the machine must be carried out by Authorized and trained personnel.** It should be done in a safe working environment and with the machine well stabilized. The engine must be turned off and let cool down sufficiently before starting to work on it.

- While performing maintenance work, please use suitable tools and clothes.
- If you need to work while the engine is running, pay attention to all moving parts, hot parts and electrical parts which may be unprotected while the machine is open.**
- DO NOT modify any component if not authorized.

The repairs cannot be considered among the routine maintenance activities. E.g. the replacement of parts that are subject to occasional damage and the replacement of electric and mechanic components that wear with use. This kind of work is not –in fact– covered by warranty.

**The periodic maintenance should be performed according to the documentation provided by the engine and alternator manufacturers. Please refer to the relevant manual supplied with the machine and to the hour meter on the machine in order to determine when service is needed.**

---

## DISPOSAL AND DECOMMISSIONING

This machine is made of parts that, if not disposed of correctly, can damage the environment and create ecological hazards. The following parts and materials need to be brought to authorized waste treatment sites:

- Metallic structure;
- Batteries;
- Engine and hydraulic oils;
- Cooling liquid;
- Filters;
- Cables.

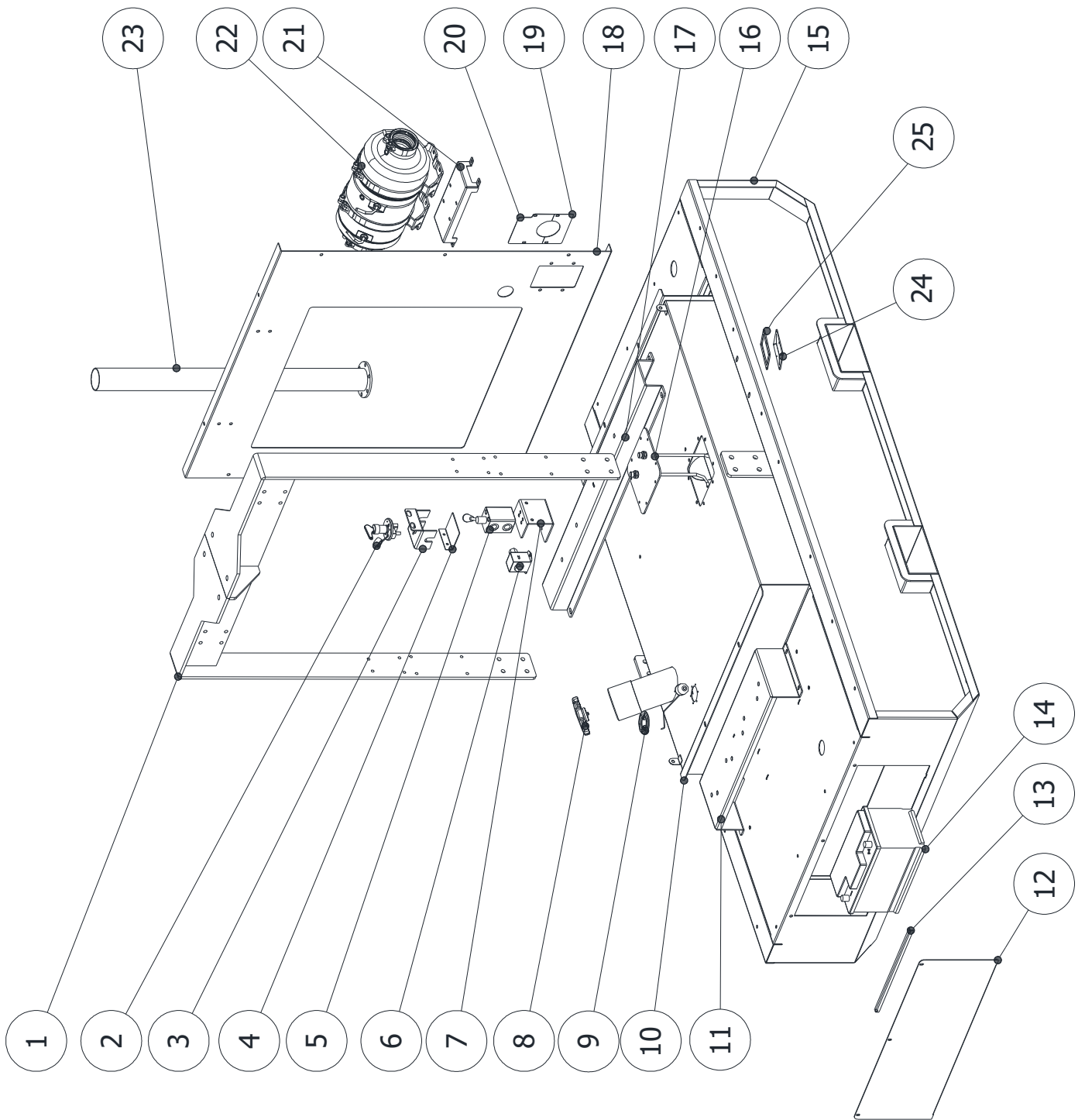
**These components have to be disposed of accordingly to local laws and dispositions.** Have qualified personnel disassemble the machine and dispose of parts.

The machine owner is responsible for dismantling and disposal of the machine and its components at the end of its working life.

---

SPARE PARTS

BASEFRAME



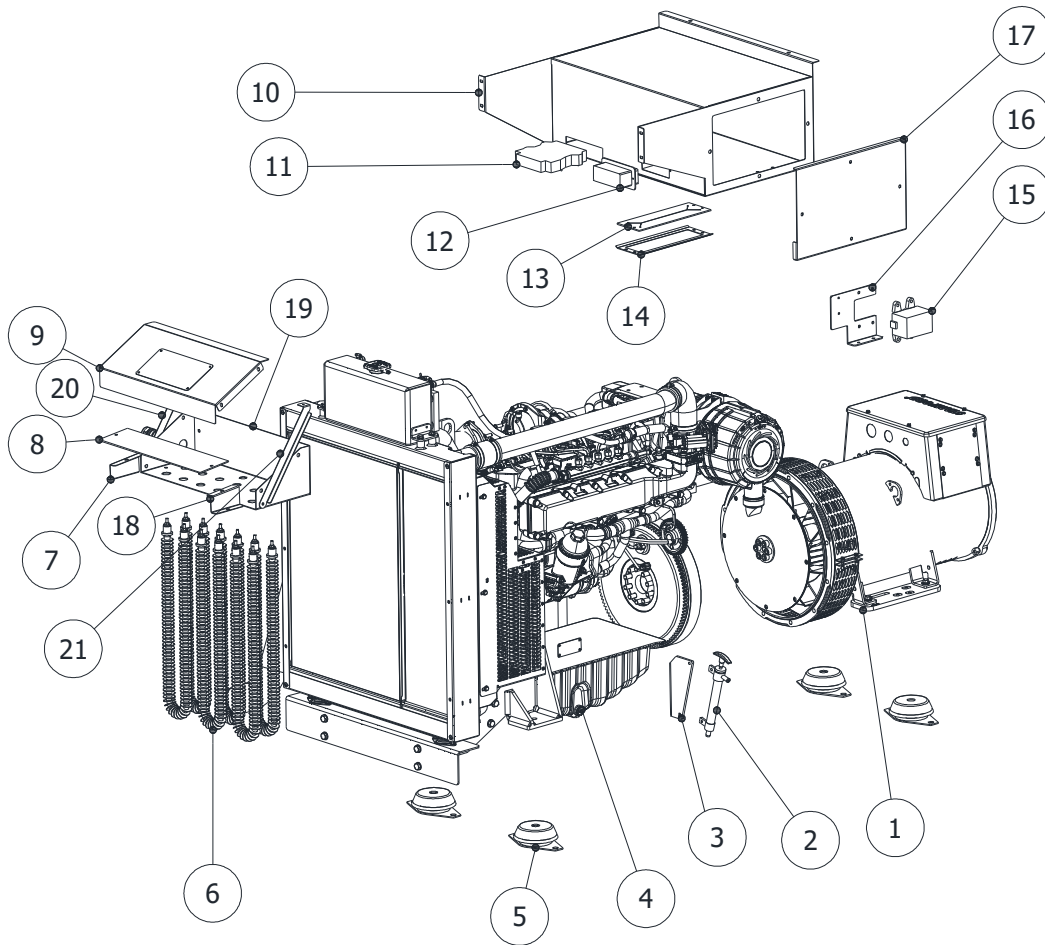
**SPARE PARTS**

**BASEFRAME**

N.	CODE	DESCRIPTION
1	352-290	Lifting beam
2	C003-019	Battery switch
3	352-499	Battery switch bracket
4	352-500	Battery switch bracket closure
5	C003-1270	Valve
6	C006-487	Fuel pump
7	352-316	Bracket
8	C003-185	Fuel tank cap
9	C001-687-229	Floating
10	352-293	Fuel tank
11	352-292	Alternator beam
12	Z352-050	Battery closure
13	Z016-247	Battery beam
14	C001-979	Battery
15	352-201	Baseframe
16	Z352-045	Fuel tank platen
17	352-291	Engine beam
18	352-203	Separator
19	352-495	Exhaust closure
20	352-494	Exhaust closure
21	352-204	Exhaust bracket
22		Kohler DPS unit
23	352-375	Exhaust escape
24	340-290	Inlet pipe rubber
25	340-289	Inlet pipe frame

SPARE PARTS

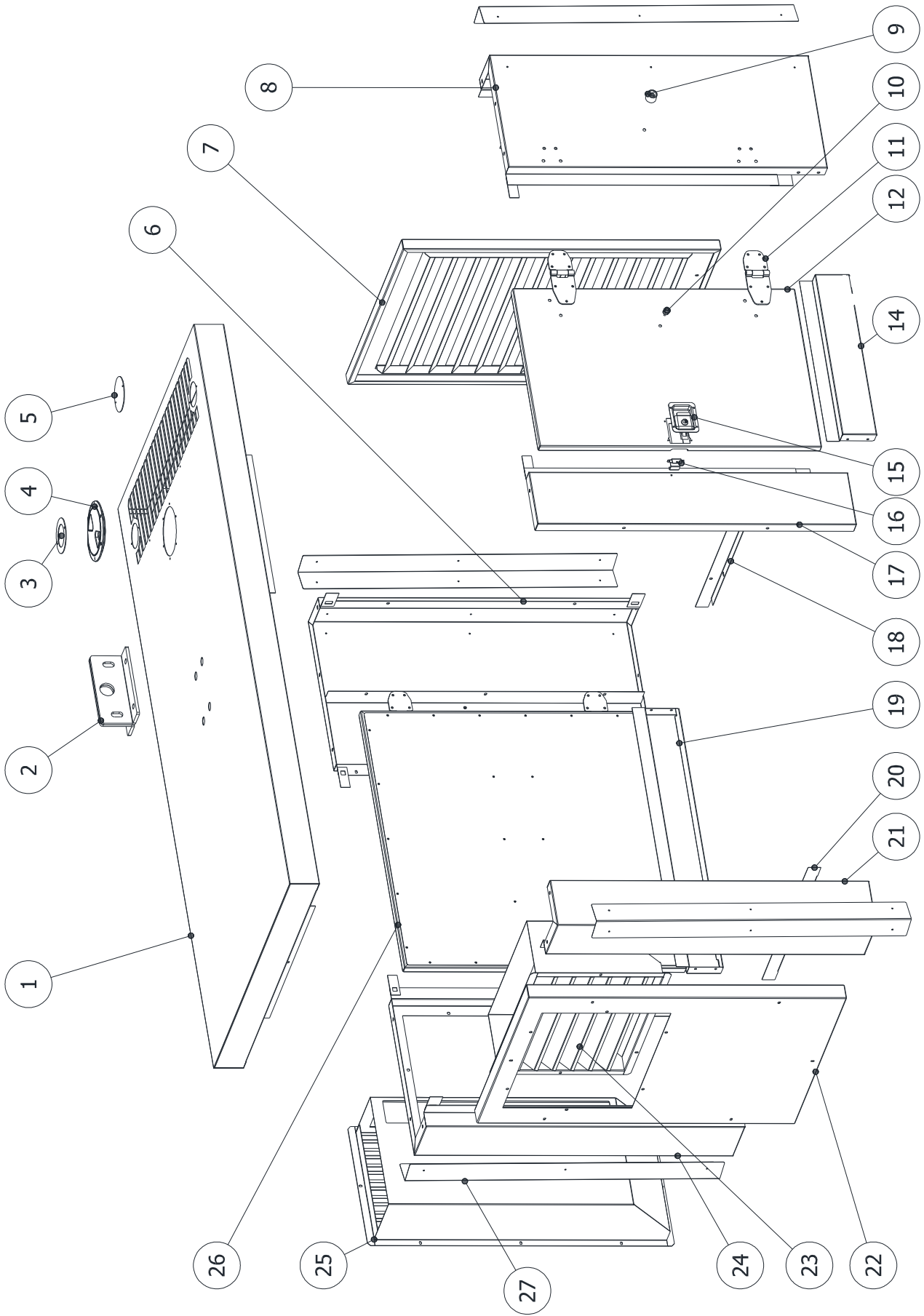
POWER PACK



N.	CODE	DESCRIPTION
1	C011-324	STAMFORD S1L2-Y1
2	C003-041	Pump
3	Z016-272	Pump bracket
4	C006-495	KOHLER KDI-TCN 3404E5/22
5	C002-006	Shock absorber
6	C001-1269	Resistor 2kW
7	491-555-SX	Lexan bracket
8	391-394	Lexan
9	352-283	Resistors wiring cover
10	352-323	Wiring box
11	C006-318	Kohler control unit
12	C006-358	Kohler connector
13	Z016-755	Rubber grommets
14	Z016-756	Grommet frame
15	C006-351	Fuse box
16	352-318	Fuse bracket
17	352-324	Cover
18	491-555	Lexan bracket
19	352-282	Resistors bracket
20	352-322	Bracket
21	352-322-SX	Bracket
	352-297	Exhaust flexy-pipe

SPARE PARTS

CANOPY



**SPARE PARTS**

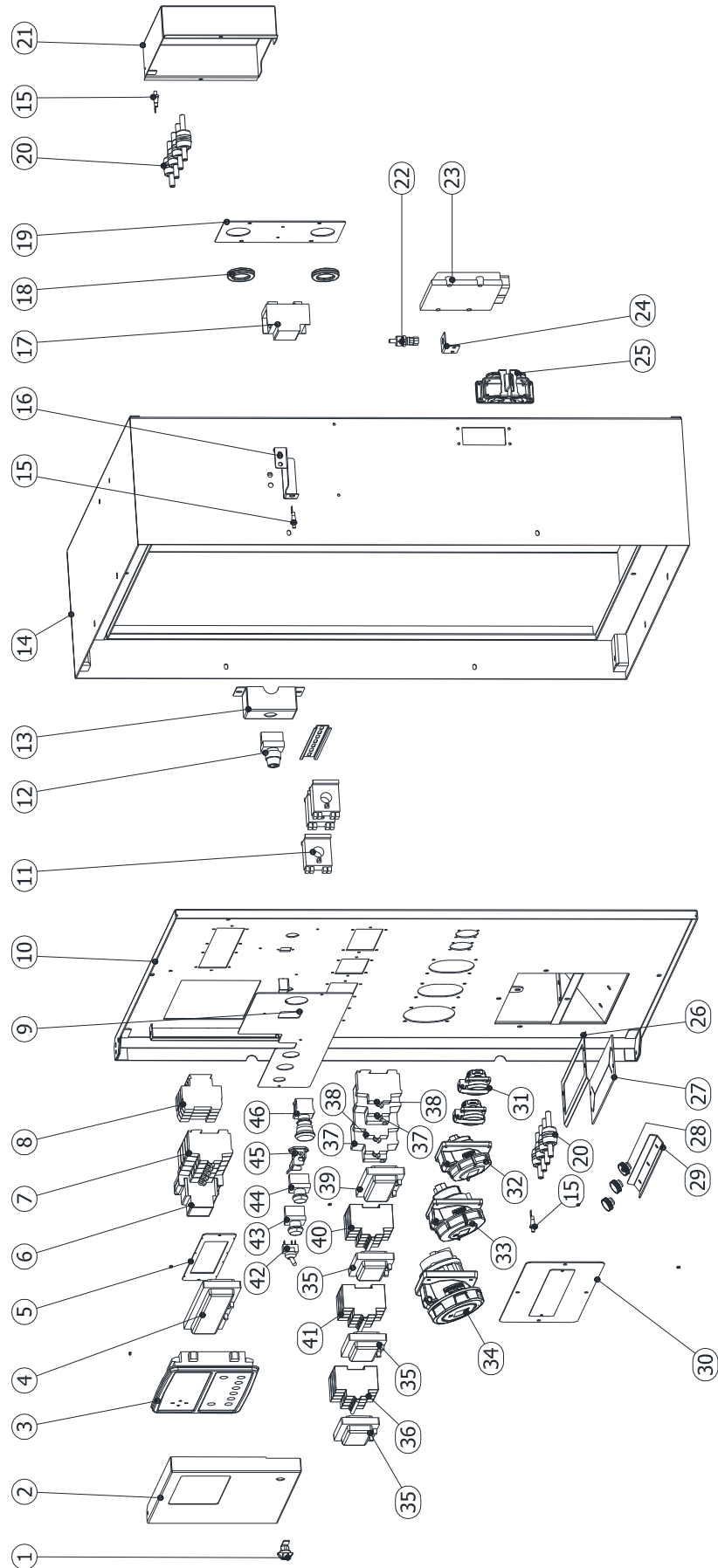
**CANOPY**

N.	CODE	DESCRIPTION
1	352-286	Canopy top
2	Z352-016	Lifting kook
3	352-492	Inox platen
4	C003-777	Manhole
5	352-314	Cover
6	352-210	Rear left corner
7	352-299	Grid
8	352-211	Rear right corner
9	C003-666	Female door stopper
10	C003-667	Male door stopper
11	C003-1035	Hinge
12	352-309	Door
14	352-452	Right band
15	C003-020	Lockage
16	Z218-185	Lockage bracket
17	352-294	Door jamb
18	352-300	Edge
19	352-302	Left band
20	352-303	Edge
21	352-284	Front right corner
22	352-298	Front panel
23	352-287	Front grid
24	352-285	Front left corner
25	Z352-031	Air intake grid
26	352-306	Door
27	352-364	Angle



# SPARE PARTS

## CONTROL PANEL



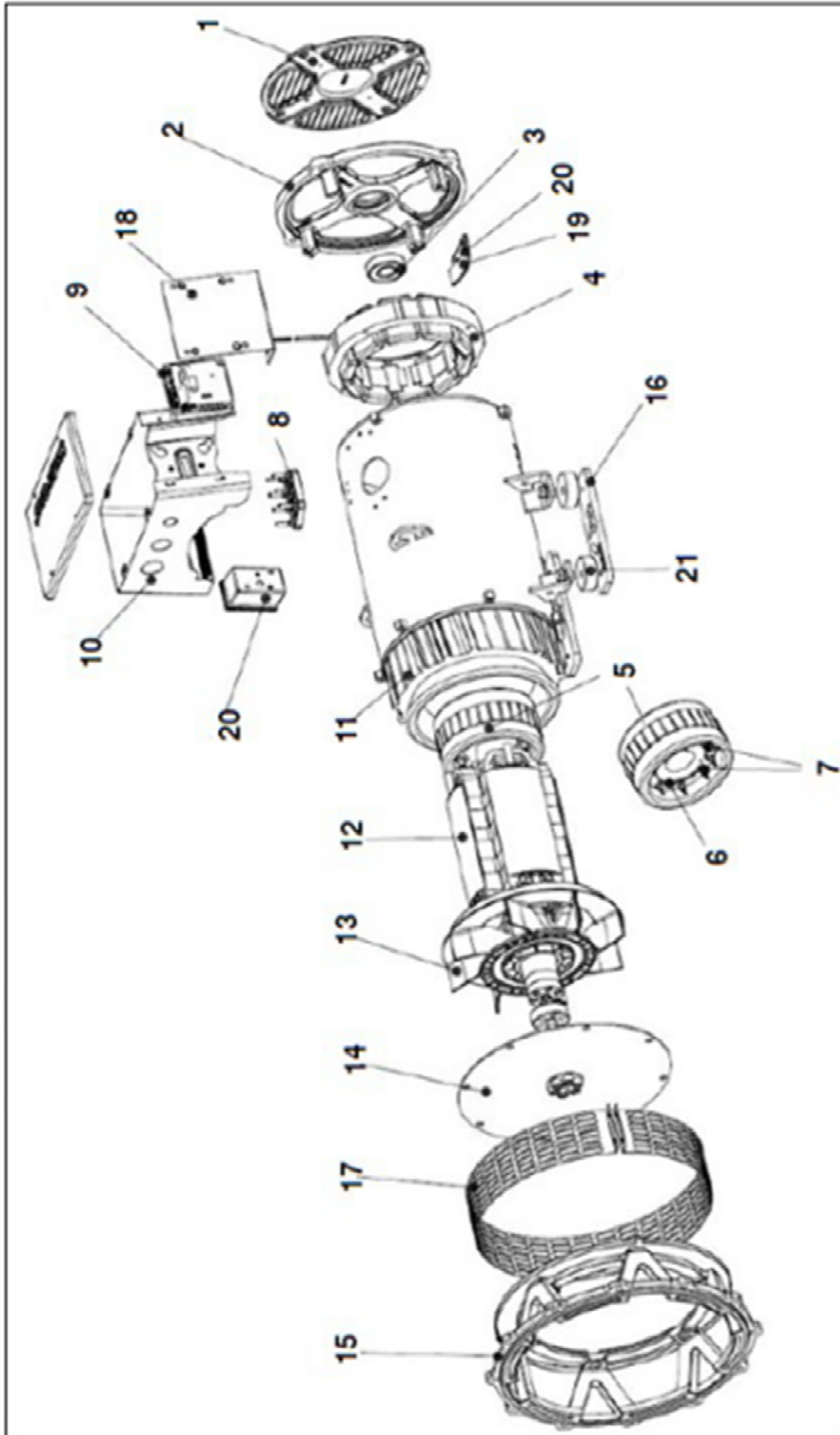
**SPARE PARTS**

**CONTROL PANEL**

<b>N.</b>	<b>CODE</b>	<b>DESCRIPTION</b>	<b>N.</b>	<b>CODE</b>	<b>DESCRIPTION</b>
1	C003-1036	Lockage	24	397-039	Temperature sensor bracket
2	Z352-020	Door	25	C008-032	16 poles male connector
3	C001-537	DSE 7310MKII	26	Z016-756	Frame
4	C003-715	Circuit breaker cover	27	Z016-755	Wire crossing
5	Z352-039	Circuit breaker platen	28	C003-1157	Knob
6	C001-261	Earth leakage relay	29	352-562	Wire stop
7	C001-255-100	4 poles 100A circuit breaker with tripping coil	30	Z334-040	Terminals cover
8	C001-928	Fuse holder	31	C001-1345	16A 230V Schuko sockets
9	352-462	Aluminium plate	32	C001-1336	3Ph 16A 400V CE Socket
10	352-561	Dashboard	33	C001-1330	400V 32A 3P+N+T CE socket
11	C001-1135	Amperometric transformer	34	C001-1331	400V 63A 3P+N+T CE socket
12	C001-838	Key	35	C003-030	Circuit breakers cover
13	Z352-035	Key box	36	C001-018-63	4 poles 63A circuit breaker
14	352-289	Closet	37	C001-594-25	RCCB 2 poles 25A 30mA
15	C001-032	Mass button	38	C001-328-16	MCB 1P+N 16A
16	352-334	Security switch bracket	39	C003-744	Circuit breakers cover
17	C001-289	TA	40	C001-018-16	MCB 4 poles 16A
18	C003-066	Wire crossing	41	C001-018-32	MCB 4 poles 32A
19	Z334-042	TA platen	42	C001-233-2	Switch
20	C003-595	Insulator M10	43	C001-278-V	Green button
21	Z352-043	Terminals cover	44	C001-278-N	Black button
22	C006-461	Temperature sensor	45	C008-001	Connector
23	C006-485	Kohler control unit	46	C003-940	Emergency stop

SPARE PARTS

ALTERNATOR

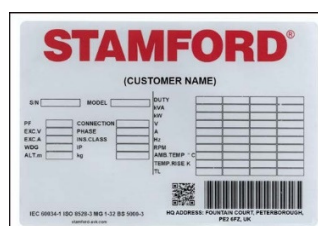


**SPARE PARTS**

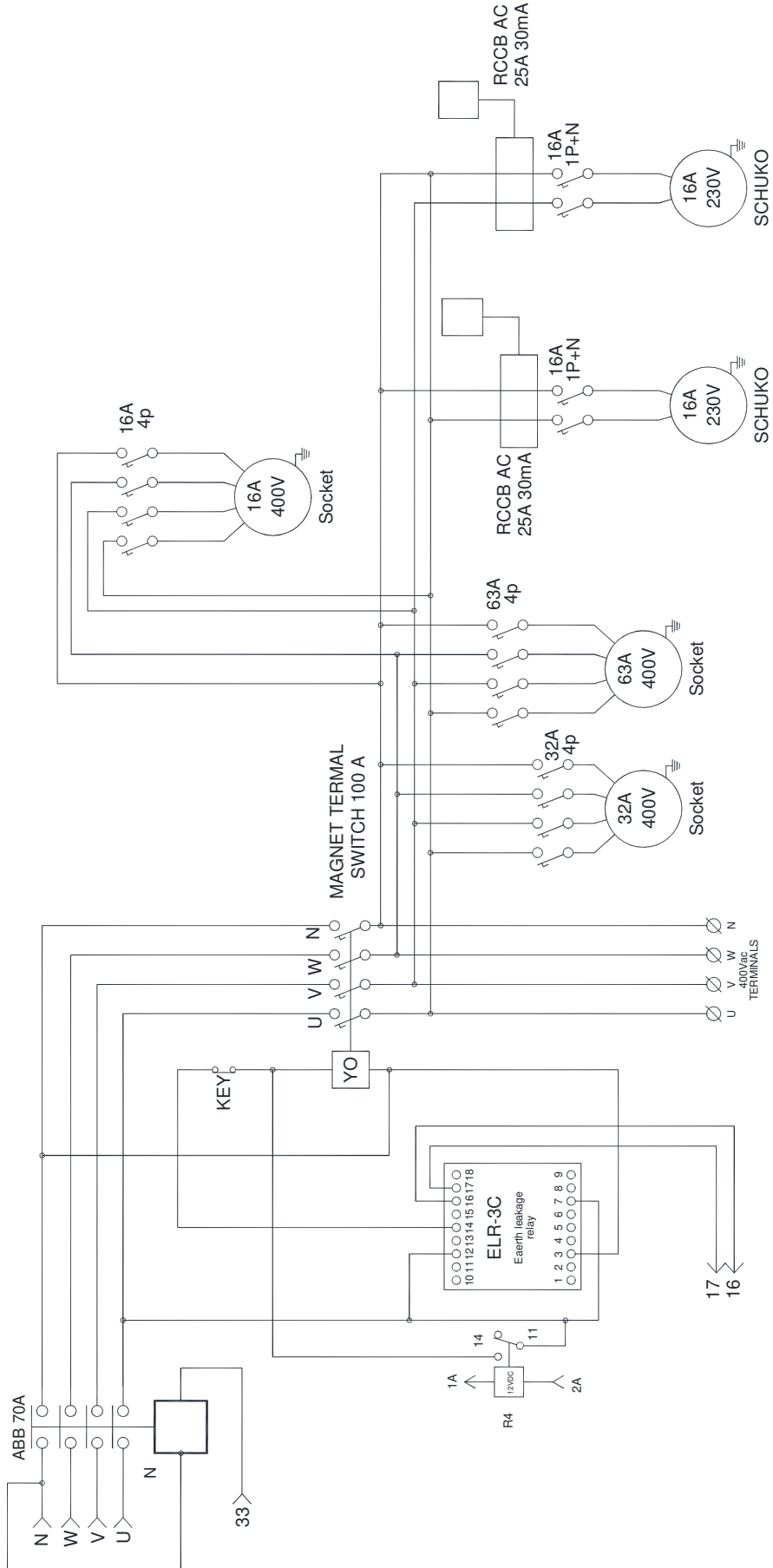
**ALTERNATOR**

N.	CODE	DESCRIPTION
1	S-A052E494	Cover, End
2	S-A051P107	Brkt, End, F1, NDE
3	S-45-0866	P0 Bearing Kit P0
4*	S-A051L226	Str, Exc, 38.0
4#	S-A051L227	Str, Exc, 45.0
4**	S-A053F533	Str, Exc, 55.0
5*	S-191-1064	P1 Wnd Ex Rtr 38 MM
5#	S-A051L228	Rtr, Exc, 45.0
5**	S-A053F505	Rtr, Exc, 55.0
6	S-45-0427	BC ROT'G Rectifier Spares Kit
7	S-RSK-1101	BC1 Rectifier Service Kit
8*	S-A054X535	Kit, Term, F1, Term Brd Conver
9	S-A059F437	Kit, Regn Ctrl Mdl, AS540
10	S-A052X197	Term Encl, F1, IP23
11	*	Wound Main Stator with Frame Assembly
12	*	Wound Main Rotor with Complete Assembly
13	S-A057R342	Fan, F0, 1, CTRF350
14	S-A052W630#	Coupling Kit, F1, SAE11.5, 1B (SAE 3 Adap / 1.2 MM DISC)
14	S-A053G582##	Coupling Kit, F1, SAE11.5, 1B (SAE 3 Adap / 1.5 MM DISC)
15	S-A052T358	Adapter Kit, F1, SAE3, 1B
16*	S-A052X631	Foot Kit, F1, Bolt-On, 180.0C/H
17*	S-A054X974	Kit, Adpt Sprs, F1 SAE3 1B, IP23
18	S-A052J157	Panel, Term Encl, F1, SD, IP23
19	S-A056F851	Htr, Cart, 80.0W, 12VAC, 0VDC
	S-A056F858	Htr, Cart, 80.0W, 24VAC, 0VDC
	S-A056F859	Htr, Cart, 80.0W, 115VAC, 0VDC
	S-A056F860	Htr, Cart, 80.0W, 230VAC, 0VDC
20	S-A054K294	Kit, Htr, F1, 12V
	S-A054K297	Kit, Htr, F1, 24V
	S-A054K299	Kit, Htr, F1, 115V
	S-A054K301	Kit, Htr, F1, 230V
21*	S-A051L177	Spacer, BK, 0.0
21**	S-A051L176	Spacer, BK, Steel S275-Black, 0.
	4**	Exciter Stator 55 MM (Y)
	5**	Exciter Rotor 55 MM (Y)
	8*	Terminal Board Kit (1 and 3 Phase)
	14#	Coupling Kit SAE 11.5 (1.2 MM x 4 CD)
	14##	Coupling Kit SAE 11.5 (1.5 MM x 3 CD)
	16*	Generator Base Plate (Foot Plates Only) Kit
	17*	DE Screen SAE 3, SAE 4
	21*	45 mm Height Spacer Block
	21**	20 mm Height Spacer Block
	*	Specity alternator part number

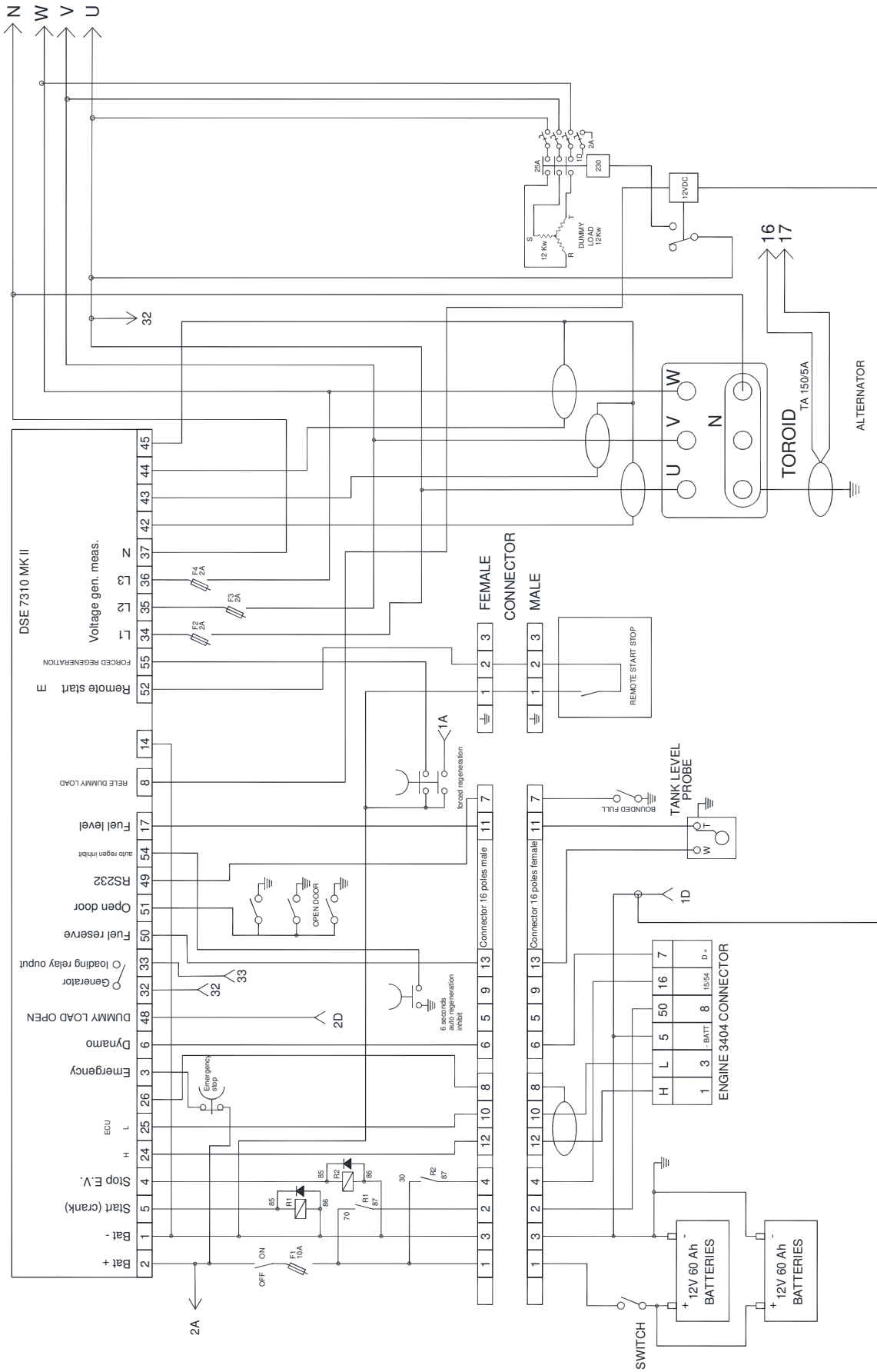
To avoid errors or delay in filling your parts order, always state the MODEL and SERIAL NUMBER from the Alternator nameplate. The alternator serial number is located on a data tag on the alternator.



# ELECTRICAL DIAGRAM



# ELECTRICAL DIAGRAM



## WARRANTY

The warranty period starts on the delivery date to the first purchaser.

**The machine is covered by warranty for one year from the above mentioned date.**

**Only genuine parts should be used to carry out repairs.**

Failure to use only genuine parts may invalidate the manufacturer's warranty.

We reserve the right to request the warranty replaced parts back for analysis.

**All engine warranty issues must be directed to the engine manufacturer, or the manufacturer's approved engine dealer.**

We will not be held responsible if:

- the machine has been used to perform tasks that it has not been designed for;
- the machine has undergone modifications not approved by us;
  - conditions of use have been abnormal;
- normal maintenance, compliant to requirements as set out by the manufacturer, have not been adhered to.

No payment or expenses refund should be pretended from us for normal maintenance or servicing nor any materials used to carry out routine servicing. The warranty is intended to cover diagnosis, repair or replacement of the defective part, and actuating the repair, should a problem arise during the warranty period. These operations will be performed free of charge.

**We offer service and warranty training for service and maintenance personnel**, if required.

Training can be carried out at a our depot or at a venue of your choice.

Don't hesitate to contact us for any further information.